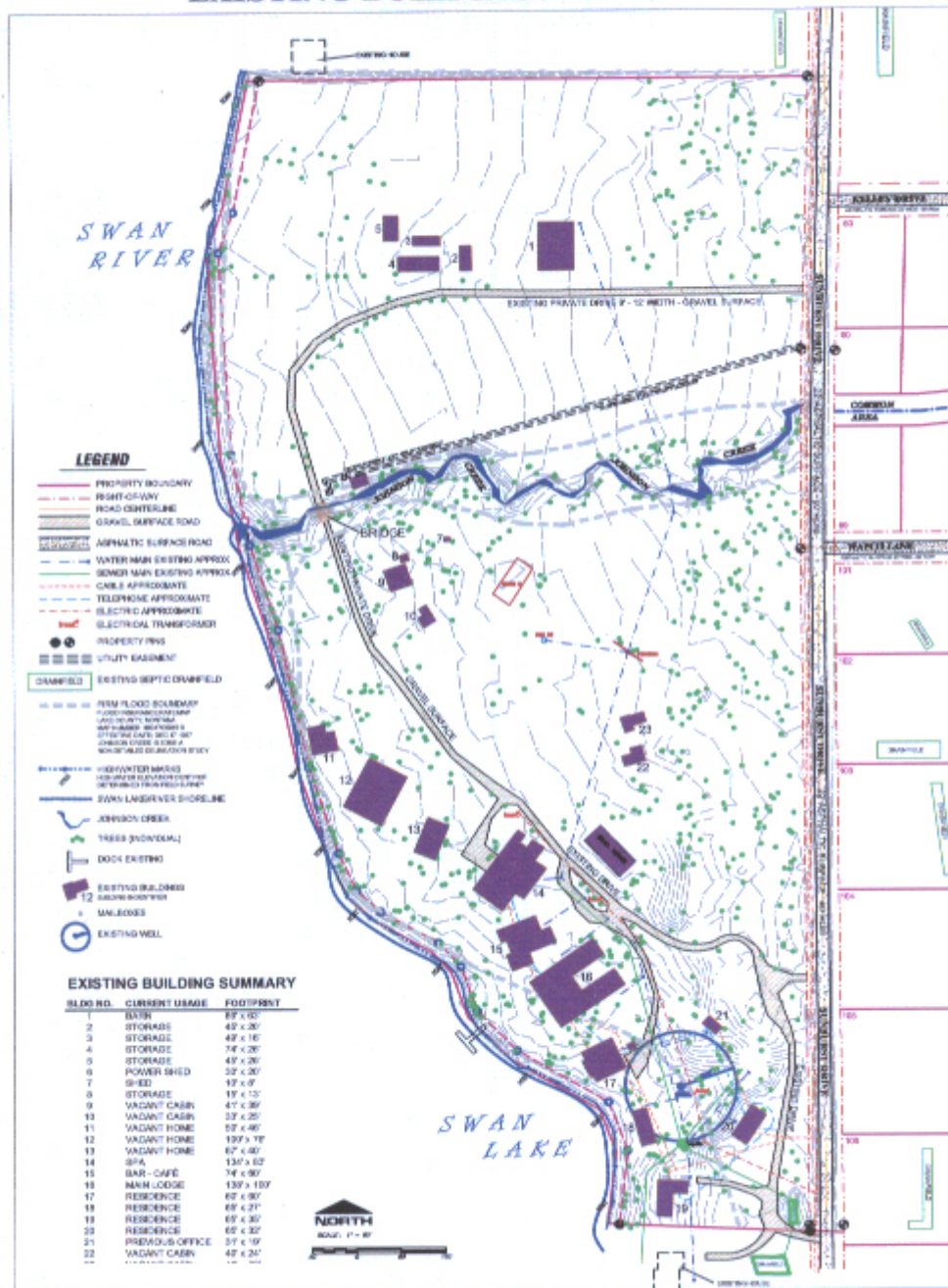


HISTORIC KOOTENAI LODGE CONDOMINIUMS

SEC 11, 14 T. 26 N., R 19 W., LAKE COUNTY MONTANA

EXISTING BUILDINGS AND UTILITIES



2
4

HISTORIC KOOTENAI LODGE CONDOMINIUMS
FOR
MILHOUS GROUP

PROJECT NO. H-21-1
DRAWN BY: JLB
DESIGNED BY: JLB
SCALE: AS SHOWN
DATE: 11-11-05

EXISTING BUILDINGS
AND UTILITIES

BILLMAYER ENGINEERING
2111 7TH ST. S. SPOKANE, ID 83402-6024

CCR 25 2005