

# PRELIMINARY PLAT FOR HISTORIC KOOTENAI LODGE CONDOMINIUMS

SEC 11, 14 T. 26 N., R 19 W., LAKE COUNTY MONTANA

## LEGEND

- RIGHT-OF-WAY  
BY ROAD AND UTILITY EASEMENTS
- ROAD CENTERLINE
- EDGE OF ROAD OR DRIVEWAY
- WATER MAIN (PROPOSED)
- SEWER MAIN (PROPOSED)
- SEWER FORCE MAIN (PROPOSED)
- UTILITY EASEMENT

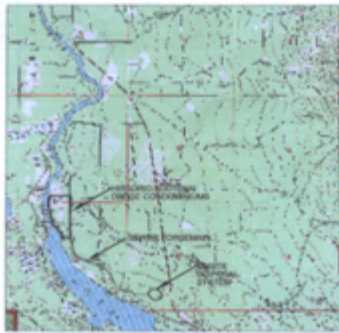
- - - - - FIRM FLOOD BOUNDARY  
FLOOD INSURANCE RATE MAP  
LAKE COUNTY, MONTANA  
MAP NUMBER 50470C010 B  
EFFECTIVE DATE: 08/15/1987  
JOHNSON CREEK IS ZONE A  
NON-DETAILED DELINEATION STUDY

- SWAN LAKE SHORELINE
- JOHNSON CREEK
- TREES
- PROPOSED NEW BUILDINGS
- EXISTING BUILDINGS (REMODELED)
- MAILBOXES

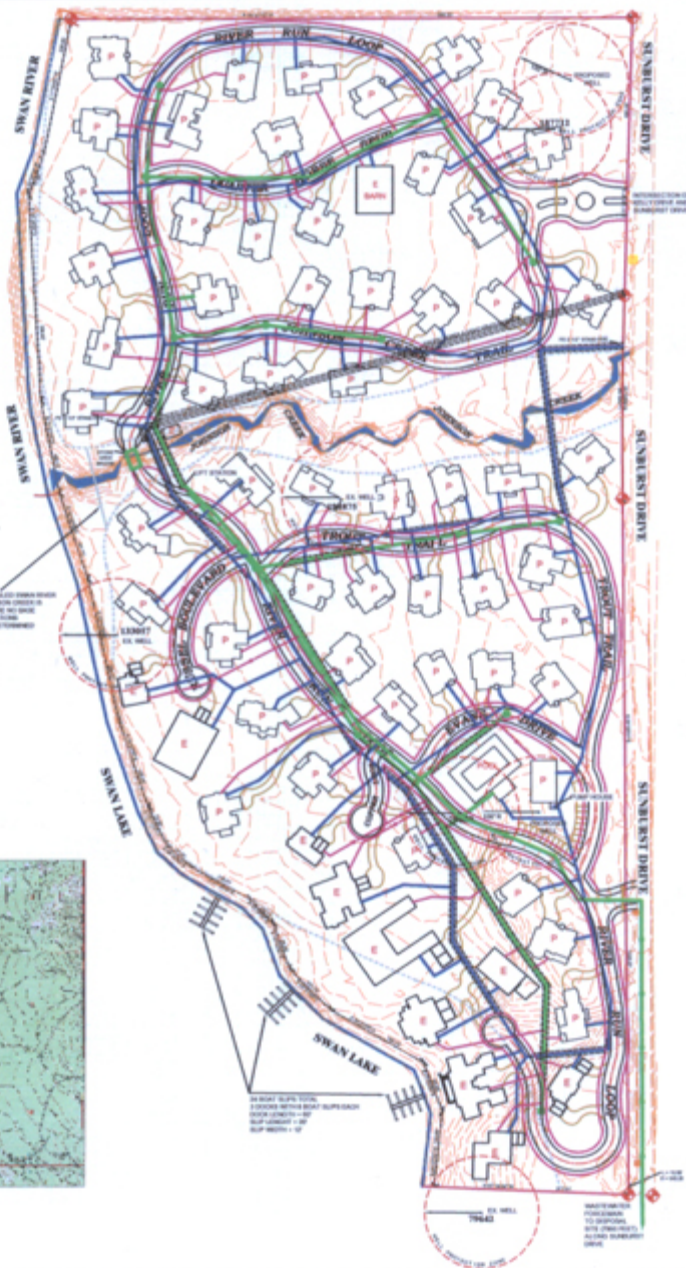
GROSS ACREAGE = 40.82 ACRES  
TOTAL LINEAL FEET OF ROAD = 7,203 L.F.  
TOTAL SQUARE FOOTAGE OF ROADS = 198,900 L.F.  
OPEN SPACE / COMMON AREA = 28.3 ACRES



LOFT OF 20 TALLEST CONDOMINIUMS  
W/IN JOHNSON CREEK IS  
ZONE A, THERE IS NO  
FLOOD INSURANCE  
RISK WITH CONDOMINIUMS



VICINITY MAP  
K.T.C.



1  
1  
**HISTORIC KOOTENAI LODGE CONDOMINIUMS**  
FOR  
**MILADUS GROUP**  
2024 W. 10TH ST., SPOKANE, MT 83402

PROJECT NO. 2024-001  
ISSUED BY: [Signature]  
DATE: 08/15/2024

**PRELIMINARY PLAT**

**BEILMAYER ENGINEERING**  
210 7TH ST. S. SPOKANE, MT 83402  
PH: 409-455-1111 FAX: 409-455-1112

THIS DOCUMENT IS THE PROPERTY OF BEILMAYER ENGINEERING. IT IS NOT TO BE REPRODUCED OR TRANSMITTED IN ANY FORM OR BY ANY MEANS, ELECTRONIC OR MECHANICAL, WITHOUT THE WRITTEN PERMISSION OF BEILMAYER ENGINEERING.